

NEW!

Get Superior Fontaine No-Slack® Technology in Dolly Applications!



Dolly fifth wheel with no bracket

55,000 lbs vertical load
Up to 140,000 lbs GCW

Dolly Fifth Wheel Part Number	Description	Weight
SLDTPL7000	Top plate only with no bracket. Left Handle Release.	245 lbs



Dolly fifth wheel with FMA bracket

55,000 lbs vertical load
Up to 140,000 lbs GCW

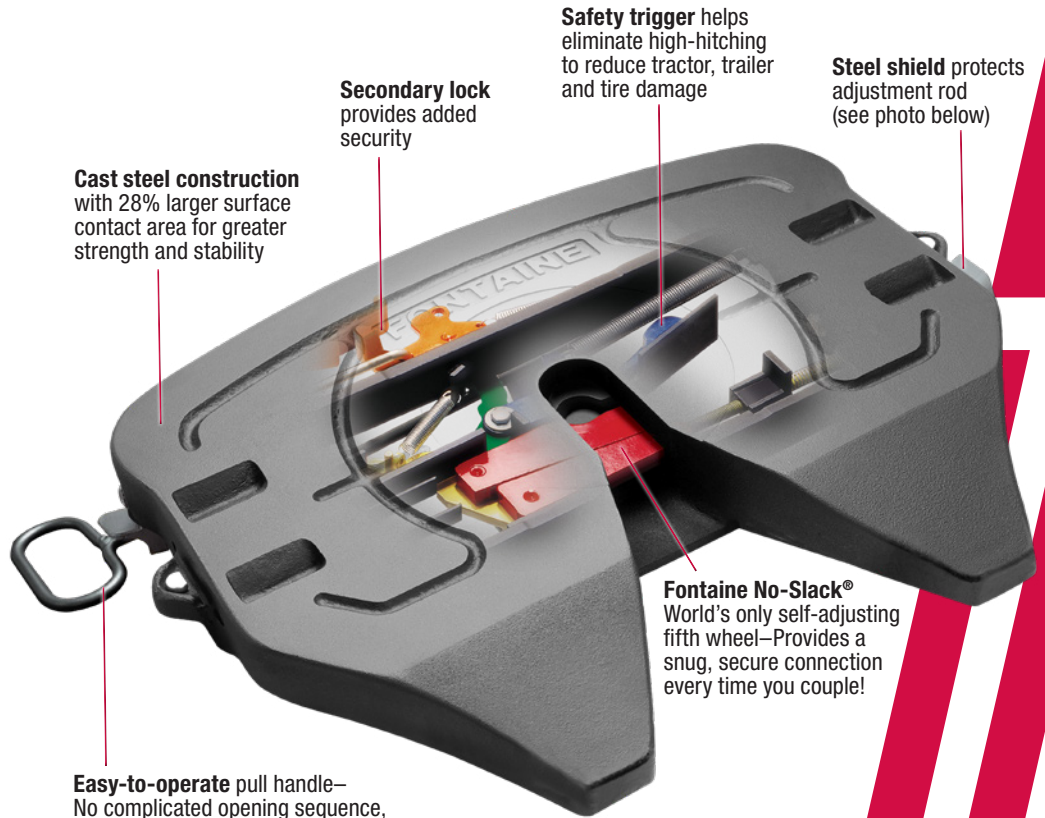
D FMA Dolly Fifth Wheel Part Number	Fifth Wheel Height	Weight
SLDFMA6375	6-3/8"	306 lbs
SLDFMA7375	7-3/8"	314 lbs
SLDFMA8375	8-3/8"	320 lbs



Dolly fifth wheel with FMAH bracket

55,000 lbs vertical load
Up to 140,000 lbs GCW

D FMAH Dolly Fifth Wheel Part Number	Fifth Wheel Height	Weight
SLDFMAH6375	6-3/8"	308 lbs
SLDFMAH7375	7-3/8"	314 lbs
SLDFMAH8375	8-3/8"	320 lbs



Safety trigger helps eliminate high-hitching to reduce tractor, trailer and tire damage

Steel shield protects adjustment rod (see photo below)

Secondary lock provides added security

Cast steel construction with 28% larger surface contact area for greater strength and stability

Fontaine No-Slack®
World's only self-adjusting fifth wheel—Provides a snug, secure connection every time you couple!

Easy-to-operate pull handle—No complicated opening sequence, just a simple straight pull






Heavy-duty bracket drops the pull handle below kingpin height to prevent damage if kingpin slides around the road side of the wheel



Steel shield protects adjustment rod if driver misses the fifth wheel and kingpin slides around the curb side of the top plate



FONTAINE®
FIFTH WHEEL
Genuine Parts

 FifthWheel.com/app
 FontaineFifthWheel
 fontaine-fifth-wheel

www.fifthwheel.com • 800-874-9780 • Email: parts@fifthwheel.com
See your Fontaine Representative for application details or refer to Application Guide (LT-076) on website • ©2024 Fontaine Fifth Wheel • LT-351 • Feb 2024 • R9

A Marmon | Berkshire Hathaway Company